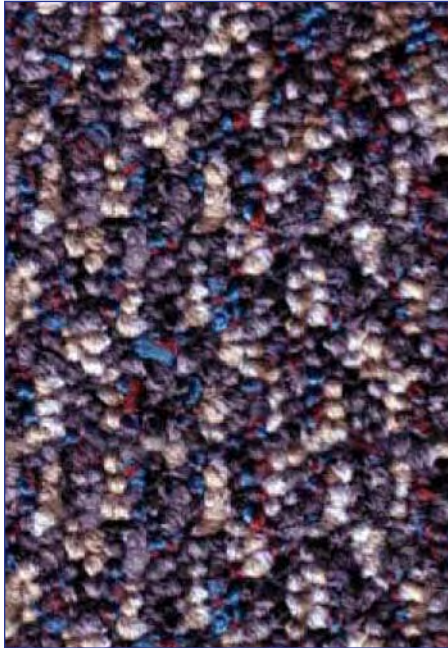
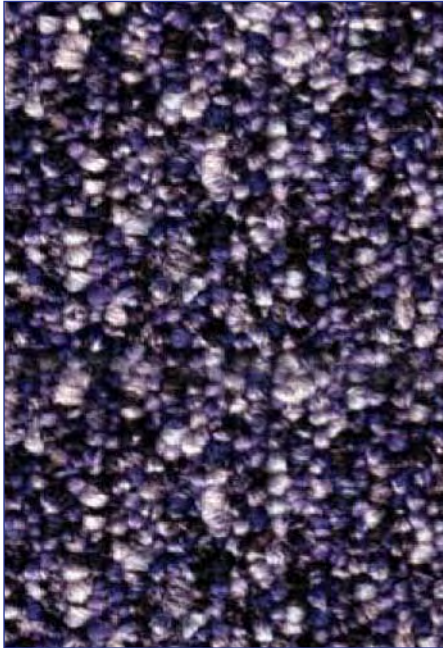


DataWorx Series

Combining gorgeous style and durability, this series is ideal for networked offices, call centers and retail environments.



27132 Pixel 24"



27130 Bluetooth 24"



27129 Golden Graphite 24"



27134 Wired 24"



27133 Flash 24"



27131 Plasma 24"

DataWorx Series

Modular Conductive Carpet Tile

SPECIFICATIONS

Construction: Textured loop

Yarn weight: 24 oz./sq. yd. (813.76 g/sm)

Total weight: 98.98 oz./sq. yd. (? g/sm)

Stitches per inch: 9.0

Pile height: 0.187" (4.78 mm)

Fiber: ECO Solution Q SD Nylon

Sizes: 24" x 24"

Conductive fiber: Staticworx Helix 44 denier conductive fiber

kV rating: AATCC 134-1996 electrostatic propensity: less than 0.4 kV (400 volts). Tested at 20% relative humidity at 20°C and 70°F.

Body voltage generation (BVG) per ANSI/ESD S97.2: Voltage on person in combination with grounded Conductors ESD Series carpet tile < 20 volts.

Electrical resistance:

ESD S7.1/NFPA 99 Resistance Characterization of Materials: Six or more readings from surface to groundable point. Tested with an applied voltage of 100V. Measured in Ohms, 1.0×10^5 minimum, 1.0×10^8 maximum.

ESD S7.1/NFPA 99 Resistive Characterization of Materials: Six or more readings between electrodes placed 1 foot apart. Tested with an applied voltage of 100V. Measured in Ohms, 2.5×10^4 minimum, 5.0×10^7 maximum.

Electrical Resistance/Voltage Test ANSI/ESD S-20.20, compliant when using approved conductive footwear system. Results within recommended range < 35×10^6 Ohm or < 100 volts.

D.O.D. HDBK263A, Section 40.1.2: Meets recommended guidelines for sensitive ESD devices, Class 1.

Roller Caster Electrical Test (CET) proven. No significant deterioration of conductive properties after more than 125,000 cycles.

Groundable path: Copper ground strip

Grounding frequency: 1 per 1,000 sq. ft.

Backing systems: Dissipative backing, 100% PVC-free recyclable, made from recycled materials.

Adhesives: Use only Staticworx approved conductive adhesives.

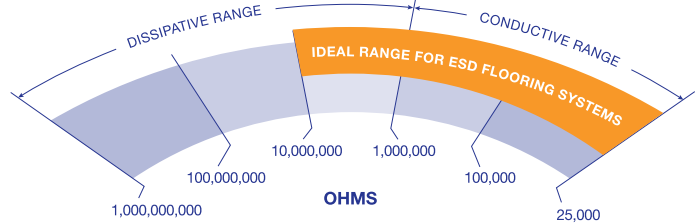
Availability: No minimum

Flammability:

ASTM E-648 flooring radiant panel — Class 1 ($\geq .45$ W/cm²)

ASTM E-662 NBS smoke density — less than 450

Staticworx DataWorx Series carpet tile systems provide superior ESD protection with an electrical resistance to ground within the ideal range for ESD Class Zero environments.



This ideal range regarding electrical resistance for ESD flooring systems is defined in ANSI/ESD S20.20-2007 for system resistance. Unlike PVC-backed flooring products, Staticworx's proprietary PVC-free backing meets this specification to allow the only true Class Zero ESD carpet system.

Staticworx modular conductive carpet tile has been awarded the Carpet and Rug Institutes' Green Label Plus certification for Indoor Air Quality.

Engineered using recyclable materials, The DataWorx Series has the only ESD-grade "cradle to cradle" modular conductive thermoplastic PVC-free backing.

Benefits compared to PVC:

- Equal dimensional stability at half the weight
- Superior delamination and edge ravel strength
- Green label certified
- 100% recyclable with recycled content
- Lower VOCs and measured smoke density test results than PVC
- Lower embodied energy than PVC



Green Label Plus is a voluntary industry testing program for carpet products that establishes the highest standard for indoor air quality (IAQ) ever set by the carpet industry. Tested by an independent, certified laboratory, carpets with this label meet stringent criteria for low chemical emissions.

DataWorx Series carpet tile is ideal for:

- Computer rooms
- Bank data centers
- Networked Offices
- Computer labs
- Reservation call centers
- Data centers

NOT RECOMMENDED FOR AIR TRAFFIC OPERATION AREAS, 911 CALL CENTERS, OR ELECTRONICS MANUFACTURING. FOR THESE APPLICATIONS, PLEASE USE THE CONDUCTORS SERIES.* (Due to the heavier yarns that are used in the DataWorx Series to create more luxurious styles, it may be slightly more difficult to push heavy carts across its surface.)

***The Conductors Series**, an extremely durable carpet tile that also exhibits Class Zero ESD performance, is better suited for installation in areas that place more demands on the flooring system such as electronics manufacturing, assembly, testing, repair, design and R&D.

The information presented is accurate and current but may be subject to change without notice.