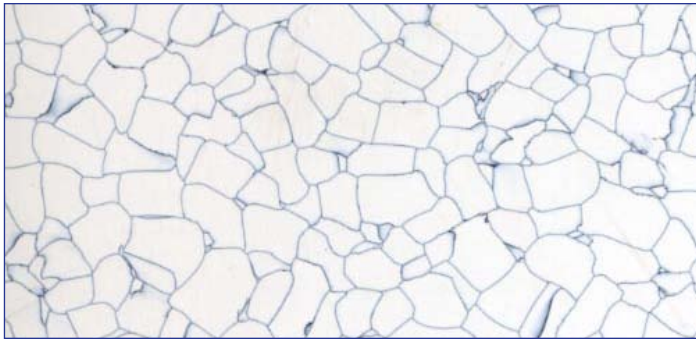


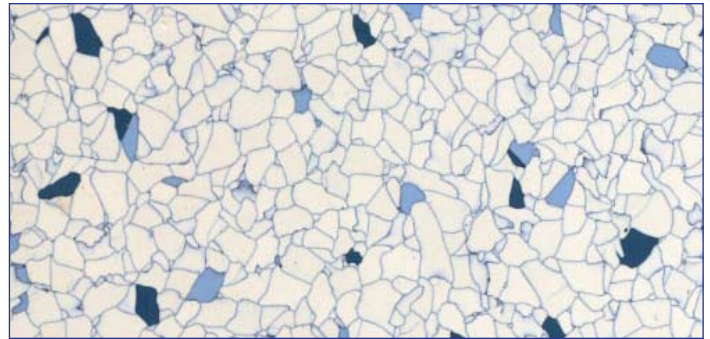
## Foundation Series – Premium ESD Vinyl Tile Flooring Systems

The Foundation Series offers permanent static control performance at the lowest total cost of ownership of any ESD flooring option available today. Encased conductive elements distributed throughout the tile ensure redundant conductive pathways. Staticworx warrants Foundation Series tile will meet or exceed the recommended electrical properties of ANSI/ESD S-20.20 for the life of the tile.\*

### Quick-Ship Colors No minimum

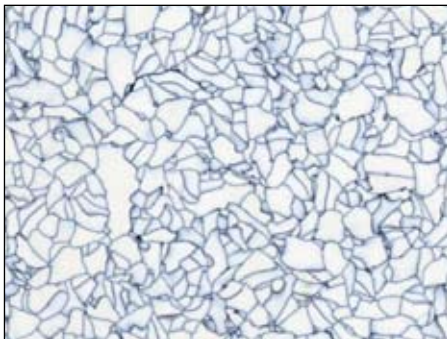


2403 Glacier [24"]



2401 Arctic Ice [24"]

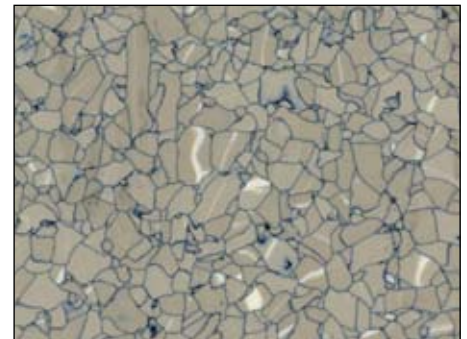
### Standard Colors



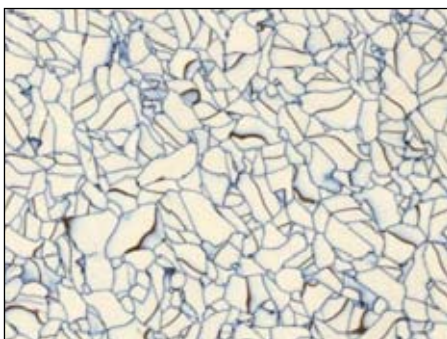
2405 Limestone [24"]



2408 Bluestone [24"]



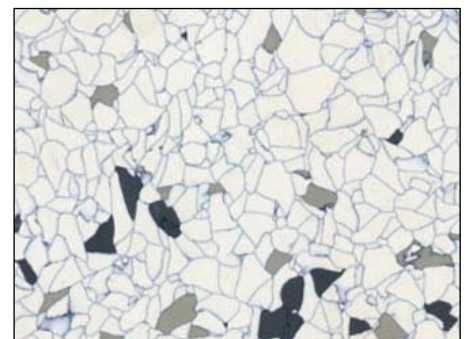
2406 Rainier [24"]



2402 Dune [24"]



2404 Granite [24"]



2407 Sea Salt [24"]

# Foundation Series

## Premium ESD Vinyl Tile Flooring Systems

SPECIFICATIONS	Test Method	ASTM Spec	Foundation Series vinyl tile	
<b>Electrical Resistance:</b> – Surface to Surface  – Surface to Ground	ESD S 7.1 (100V) NFPA 99 (500V) ASTM F 150 (500V)  DIN 51953 (500V)	  $2.5 \times 10^4 \Omega$ (SD : $1 \times 10^6 - 10^9$ )  $2.5 \times 10^4$	Conductive $2.5 \times 10^4 - 10^6$  $2.5 \times 10^4$	Static Dissipative* $1 \times 10^6 - 10^8$
<b>Electrostatic Propensity</b>	ESD STM 97.2		Less than 20V	Less than 20V
<b>Static Decay</b>	Federal Test Method 101B Method 4046 at 15% Relative Humidity	< 0.5 sec	0.01 sec	0.01 sec
<b>Material Composition</b>	ASTM F 1700, Certificate of Compliance	Homogeneous		
<b>Thickness</b>	ASTM F 368, DIN EN 428	As specified $\pm 0.0005$ in	3 mm standard size (2 mm thickness also available as special order item.)	
<b>Nominal Sizes</b>	ASTM F 536, DIN EN 427	$\pm 0.016$ in./lin. ft.	24" x 24" (12" x 12" and 36" x 36" sizes also available as special order items.)	
<b>Squareness</b>	ASTM F 540	Maximum 0.010 in	< 0.010"	
<b>Residual Indentation</b>	ASTM F 1914, DIN EN 433 max.	Average less than 8%, Single reading 10%	< 7%	
<b>Feasibility</b>	ASTM F 137	No crack or break	No crack or break	
<b>Dimensional Stability</b>	ASTM fed. Std. No. 501a, Method 6211, DIN EN 434	(0.51mm/304.8mm)	< 0.024"/ft. < 0.015"/ft.	
<b>Resistance to Chemicals</b>	ASTM F 925, DIN EN 423	No more than a slight change in surface dulling, surface attack or staining.	No more than a slight change in surface dulling, surface attack or staining.	
<b>Thermal Resistance</b>	DIN 52612		$6.18 \times 10^3$	
<b>Thermal Conductivity</b>	DIN 52614		0.309 W/mK	
<b>Static Load Limit</b>	Modified ASTM F 970-00		2,500 psi	
<b>Smoke Density</b>	ASTM E 662	< 450	< 450	
<b>Flame Spread</b>	ASTM E 84, NFPA 225	< 75	< 75	
<b>Fire Resistance</b>	DIN 4102 ONORM B 3810		B1 B1 Q1	
<b>Critical Radiant Flux</b>	ASTM E 648, NFPA 253		CLASS 1 > 1.08W/cm <sup>2</sup>	
<b>Abrasion Resistance</b>	ASTM D 1044, CS-10F wheel, 500Gm Weight		Cycle % 10,000	Gauge Loss 1.60
<b>Resistance to Wear</b>	DIN EN 660-1		M	
<b>Effect of Castor Chair</b>	DIN EN 425		No damage	
<b>Color Fastness</b>	ISO 105 B02		At least 6	
<b>Sound Absorption</b>	DIN 52210		Approximately 2dB	
<b>Standard for Health Care Facilities</b>	ASTM E 84, NFPA 225	< 75	< 75	
<b>Fulfills Product Requirements</b>	DIN EN 49		Yes	

\*Please note: Static dissipative vinyl is a special order item. Static dissipative flooring does not adequately duplicate the grounding performance of wrist straps and may not meet all of the requirements of class zero handling or the recommended electrical parameters of ANSI/ESD S 20.20. For this reason, StaticWorx always recommends conductive vinyl tile for applications where a person may come in contact with static sensitive electronics. Please consult the StaticWorx technical department for supporting documentation regarding this important distinction.

**Staticworx Foundation Series vinyl tile flooring systems provide superior ESD protection with an electrical resistance to ground within the ideal range for ESD Class Zero environments.**

This ideal range regarding electrical resistance for ESD flooring systems is defined in ANSI/ESD S20.20-2007 for system resistance.

